

Alloy Ratchet Tube Bender Kits



YELLOW JACKET®



63325 Deluxe Kit



63331 Basic Kit

Bending Made Easy of 1/4" to 7/8" Soft Copper and Soft Aluminum.

The **YELLOW JACKET® Alloy Ratchet Tube Bender Kit** creates smooth and consistent bends when working with 1/4" to 7/8" soft copper, aluminum and light wall hydraulic tubing. The mandrel attachment ball-detent feature and color-coded mandrels make it easy to switch between different tubing sizes. The simple, yet powerful ratcheting mechanism is easy to actuate. The 63342 Reverse Bender Adapter, included in the 63325 Deluxe Kit, adds the capability to bend tubing from the outside of the bend.



Shown above with Reverse Bender Adapter P/N 63342 (included in 63325 Deluxe Kit)

FEATURES & BENEFITS

- Color coded alloy mandrels to bend 1/4", 5/16", 3/8", 1/2", 5/8", 3/4" and 7/8" tubing
- Reverse Bender Adapter (PN 63342) included in Deluxe Kit (PN 63325) or may be ordered separately
- Simple and secure mandrel attachments with ball-dent feature
- Smooth and consistent bends every time
- Bend 3/4" tube to 90° in less than 10 seconds
- Trouble-free ratchet mechanism
- Quick change bending mandrels and shoes to rapidly move from one size tubing to the next
- Index marks to locate bends
- Cutter and reamer helps prepare tubing
- Durable, hard plastic case
- One-year warranty

UPC #	Description
63325	Deluxe Alloy Ratchet Tube Bender Kit (includes 63342 Reverse Bender Adapter)
63331	Alloy Ratchet Tube Bender Kit
63342	Reverse Bender Adapter for 63331

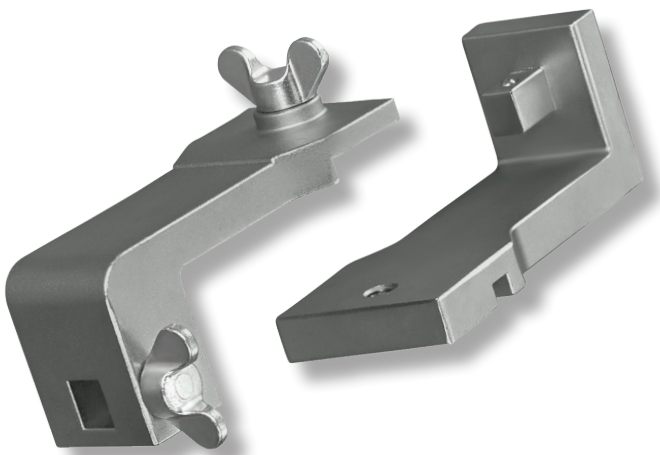
For replacement parts see reverse side or visit www.yellowjacket.com



63325 Parts



63331 Parts



63342 Reverse Bender Adapter



HANDLE PARTS:
63339 Ratchet Body Assembly
63340 Ratchet Bar and Catch Bolt
60348 Wing Nut and E-Clip

P/N #	Replacement Parts	Bending Radius
63326	Alloy Bending Mandrel - 1/4"	1"
63327	Alloy Bending Mandrel - 5/16"	1-1/8"
63332	Alloy Bending Mandrel - 3/8"	1-1/4"
63333	Alloy Bending Mandrel - 1/2"	1-1/2"
63334	Alloy Bending Mandrel - 5/8"	1-1/2"
63335	Alloy Bending Mandrel - 3/4"	1-3/4"
63336	Alloy Bending Mandrel - 7/8"	2"
63329	Crossbar Assembly 3/4" to 7/8"	
63330	Crossbar Assembly 1/4" to 5/8"	
63342	Reverse Bender Adapter	
60328	Fillister Head Screw	
60348	Wing Nut and E-Clip	
63340	Ratchet Bar and Catch Bolt	
60343	Bender Body Housing	
N/A	Spiral Pins	
60344	Catch Pin and Spring	
60345	Catch Lever	
60346	Flat Spring	
60349	Tension Spring	
60347	Feed Lever	
63339	Ratchet Body Assembly	
63338	Plastic Carrying Case	
60101	Small Cutter for 1/8" to 1-1/8" OD	
60161	Tube Reamer - 1/16" to 1-3/8"	