

NEW

MAXIBLUE®

BUILT ON A **LEGACY**. POWERED BY **INNOVATION**.



PERFORMANCE. INTELLIGENCE. RELIABILITY.

MaxiBlue® V2 is the next-generation pump in the trusted BlueDiamond® range, featuring enhanced Rotary Diaphragm technology in a **lighter, more efficient design**. Its smart control electronics enable **real-time monitoring** and **adaptive condensate management**.

With a clog-resistant, **filter-free** design and integrated **CondenSense™** technology, it **self-adjusts** its flow speed to match condensate levels, ensuring **precise performance**, **lower energy use**, **lower sound** volumes and **minimal maintenance**.



MAX FLOW
14 L/Hour



SOUND RANGE
19dB(A) - 21 dB(A)
(Low flow) (High flow)



MAX HEAD
8 Metres



SUGGESTED A/C UNIT
Up to: 14 KW



MAX LIFT
8 Metres



POWER
115V - 230V - 50/60Hz

**Full metric specifications on the next page ►*

MAXIBLUE® V2 DELIVERS

- Automatic priming without the need to manually siphon.
- Enhanced Rotary Diaphragm technology to prevent **bio-film** build-up.
- **Dynamic condensate monitoring** for active condensate tracking and monitoring.
- **CondenSense™** integration for intelligent, demand-based operation with **automatic flow adjustment**.
- **Energy and sound efficiency** minimises power usage and reduces operational sound.
- **Soft start sequencing** ensures smooth, quiet system activation and prolongs pump life.

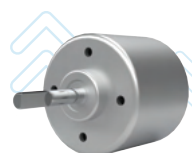
IDEAL FOR

- Air conditioning systems up to **14KW**.
- **Mini-split** and **cassette** systems.
- Mid-range fan coil applications.
- **High humidity** environments.
- Ideal for pumping and preventing **bio-films**.

PURCHASE WITH

- MaxiBlue | V2 with CondenSense™ Reservoir (X88-701)

V2 NEW FEATURES



UPGRADED EFFICIENCY

MaxiBlue V2 features a brand new, **cutting-edge brushless motor** delivering unbeatable **performance**, superior **reliability** and enhanced **energy efficiency**.



CONDENSENSE™ COMPATIBLE

Now with smart **CondenSense™** technology, enabling **variable speed control** and **soft start sequencing** for **intelligent**, efficient and unintrusive condensate removal.



NEW ARCHITECTURE

MaxiBlue V2 features a new **streamlined body**, integrated elastomeric feet, and new **plug-and-play** connectivity, making setup simpler than ever.



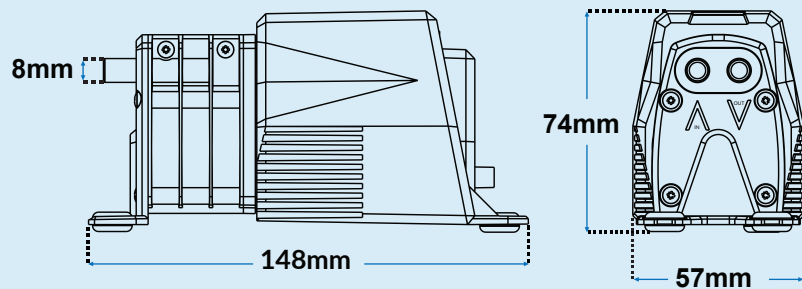
DYNAMIC MONITORING

Providing real-time performance data for engineers. **Rear-mounted LED** indicators deliver instant **pump status** updates, simplifying HVAC maintenance.

Find out more about V2 series ►

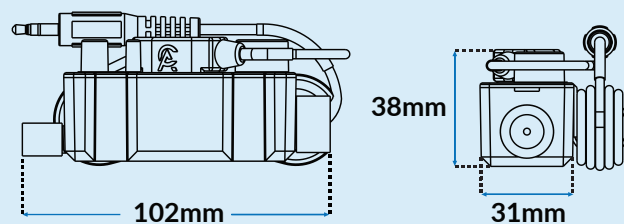


PUMP DIMENSION (MM)



*Power and alarm connection lead - 2 metres

RESERVOIR DIMENSION (MM)



*Aux connection lead - 2 metres

PERFORMANCE

Max Flow:	14 Litres Hour
Max Head:	8 Metres
Max Lift:	8 Metres
Sound Range:	19dB(A) - 21 dB(A)

CONSUMPTION

Voltages:	115-230V
Frequency:	50/60Hz
Draw (A):	0.03 (115V), 0.05 (230V)
Power (W):	5.5W
Power (VA):	5.7VA
Power Factor:	0.96
IP Rating:	IP4X

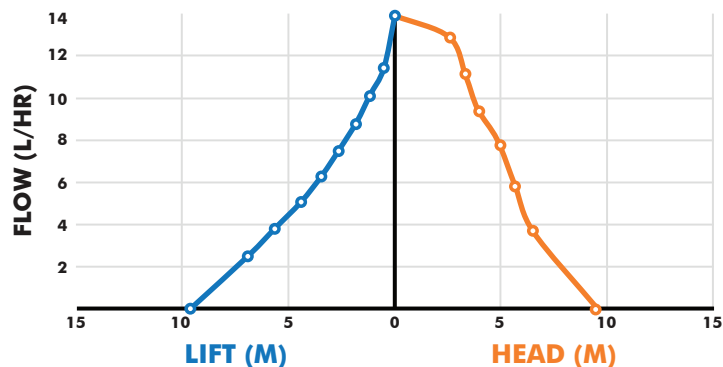
SIZING (LxWxH)

Dimensions:	148 x 57 x 74mm
Weight:	640 Grams
Inlet:	8mm Straight
Outlet:	8mm Straight
Alarm lead:	2 Metres
Reservoir:	102 x 31 x 38mm

UNIT

Max A/C KW:	14KW
-------------	------

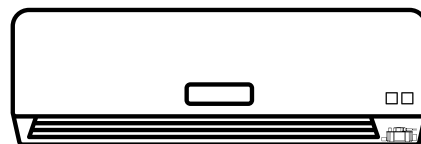
PERFORMANCE GRAPH



The graph presents flow, head, and lift performance for the **MaxiBlue® V2**'s operating conditions, showing how each parameter varies with system demand.

DISCHARGE PIPE CHART

 Ideal for Mini-Split & Cassette systems



V (↑)	8m	7m	6m	5m	4m	3m	2m	1m
H (→)	0m	3m	6m	9m	12m	15m	18m	21m

(V) ↑ Vertical Discharge Pipe, (H) → Horizontal Discharge Pipe

The **MaxiBlue® V2** can be mounted in any orientation up to **8m** away from the air conditioning unit.

User Manual: Scan the QR code to access the full user manual, including explanation of pump features.



Installation Guides: For a simple step-by-step videos on the quickest and easiest way to install your pump.



This datasheet is provided for general information only and does not constitute a warranty or guarantee of performance. The pump must be installed and operated in accordance with the manufacturer's instructions and applicable local codes. Use of the pump outside its rated conditions (e.g., voltage, head height, fluid compatibility, ambient temperature) may result in malfunction or damage and will void any applicable warranty. It is the responsibility of the installer and end-user to ensure suitability for the intended application.

MAXIBLUE V2 DATASHEET

BLUEDIAMOND | bluediamondpump.com

CHARLES AUSTEN PUMPS LTD (Manufacturer)

Address: 100 Royston Road,
Byfleet, Surrey,
KT14 7NY, United Kingdom

Tel: +44 (0)1932 355277

Email: info@charlesausten.com

Web: charlesausten.com



Global Offices

UK Office (HQ): Surrey, England

EU Office: Rotterdam, Netherlands

US Office: Buford, Georgia

